

FLOODING DETECTOR

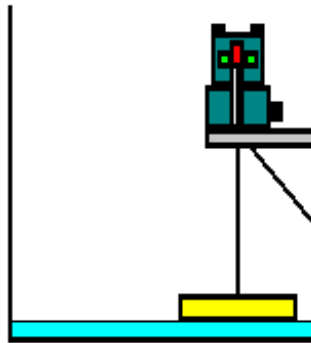
MIP model NATI

1 - GENERAL

- For flooding detection
- 1 set point
- High detection sensitivity : 2 cm
- Equipped with a stainless steel flat float
- Fixed on a bracket

2 - TECHNICAL DATA

- The detector relays on a bracket fixed on the wall of the room to be controlled .
- The float is a 30 mm high stainless steel cylinder that relays on the ground
- A 2 cm rise of water switches the detector
- Weight : 18 kg about



3 - ELECTRICAL SPECIFICATIONS

Electric mechanism :
 Type MS11B : SPDT reed switch rhodium switch sealed under controlled atmosphere (DPDT on request)

INTERRUPTING CAPACITY WITH RESISTIVE LOAD

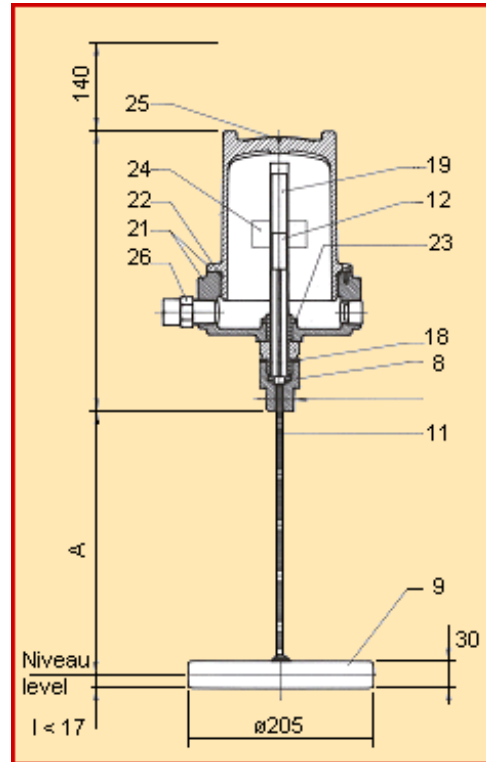
48 V-	1,25 A
110 V-	0,50 A
110 V~	0,70 A
220 V~	0,35 A

Electric housing :

- aluminium alloy
- epoxy coated
- screwed casing
- sealing : EPR o-ring
- cable entry 3/4" NPT

3 versions available :

- STD weather proof IP667
- ADF explosion proof EEx d IIC T6 + IP667
- SI intrinsically safe EEx ia IIC T6 + IP667



ITEM	DESIGNATION
8	Coupling
9	Float
11	Stem
12	Magnetic sleeve
18	Adapter gasket
19	Adapter
21	Housing
22	Housing gasket
23	Nut
24	Electric mechanism
25	Name plate
26	Cable gland

For further information, please send an E-mail to the following address: instruments@tc-fluidcontrol.com

The characteristics of the products described on this page may be modified without notice, in the interests of regular improvement. In addition, the technical data reproduced here is provided for information only.